

Townhouse —

The townhouse at Trent Basin is influenced by the famous canalhouses of Amsterdam. Providing flexible living over three storeys, the townhouse has a ground floor kitchen diner, a first floor living space that opens onto a balcony, and two or three bedrooms. This is a modern reimagining of the classic townhouse.



House types

- Type A
- Type C
- Type C
- Type D
- Type E
- Type F
- Type G
- Type H
- Type J
- Type K
- Type L
- Mews Type 1
- Mews Type 2
- Mews Type 3
- Tower House

TRENT BASIN

Site layout —

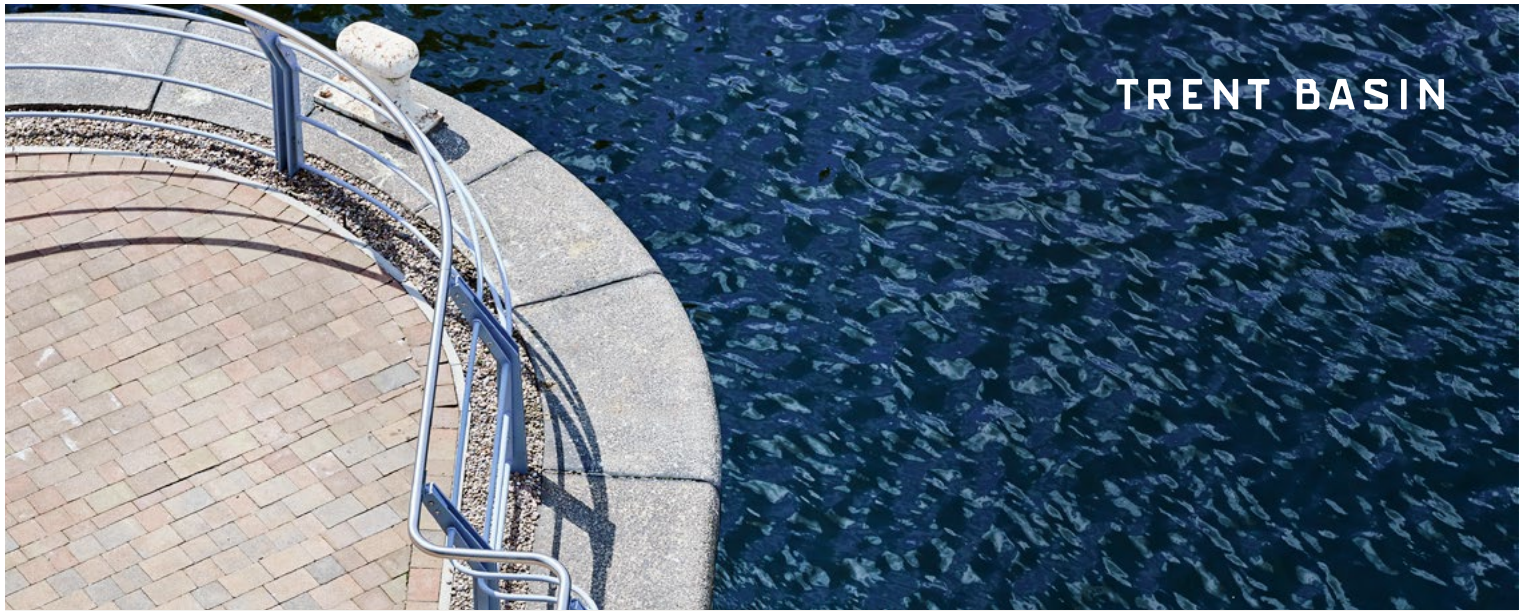
Trent Basin is a riverside neighbourhood of low energy homes and apartments designed by award-winning architects, located on the banks of the River Trent. Shown below are the homes for sale in phase two of the development.



Townhouse

Plot number twenty two

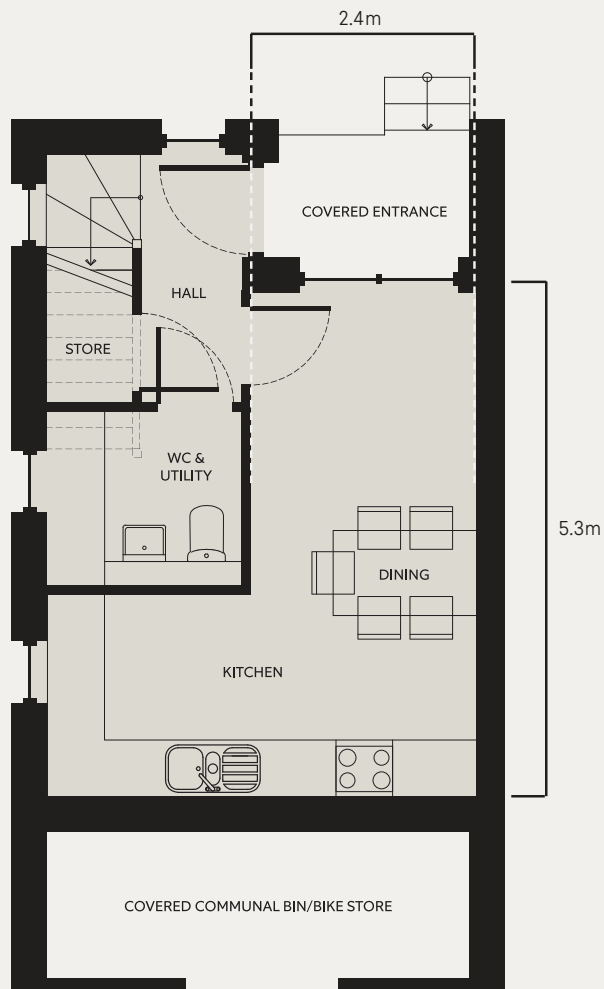
22 —



TRENT BASIN

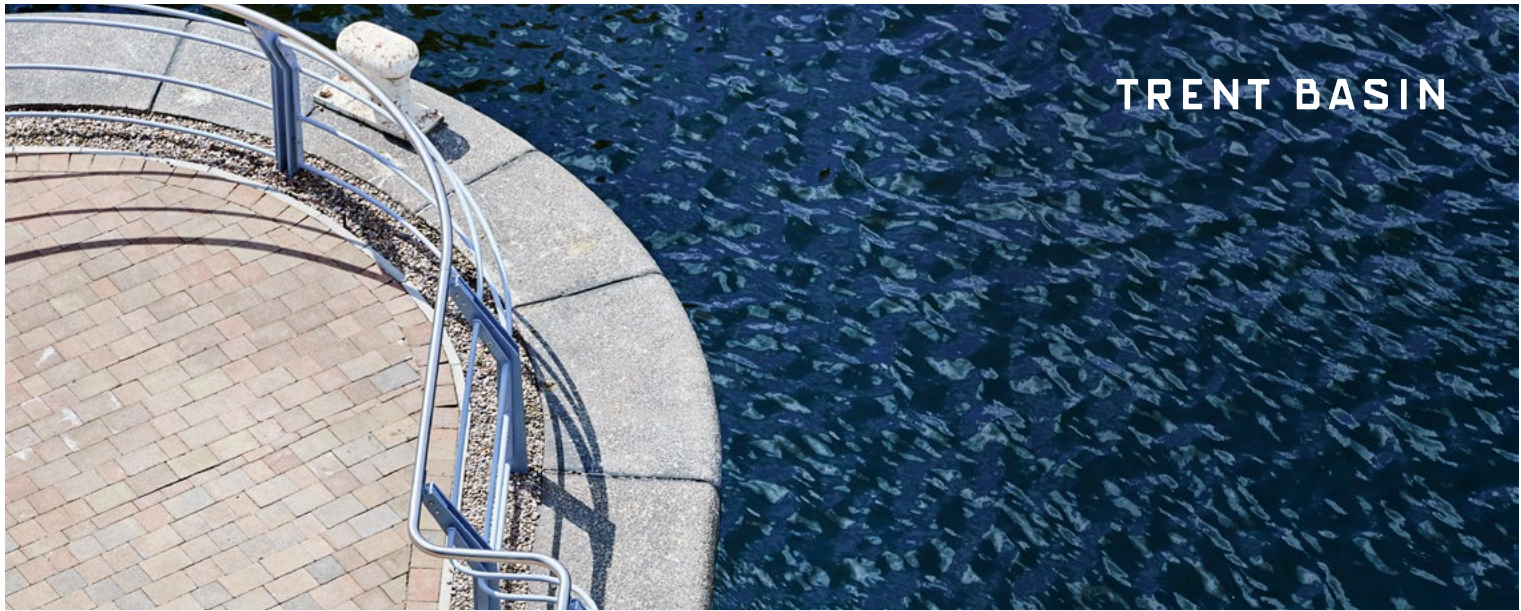
22 —

Riverfront Ground floor plan



Dimensions

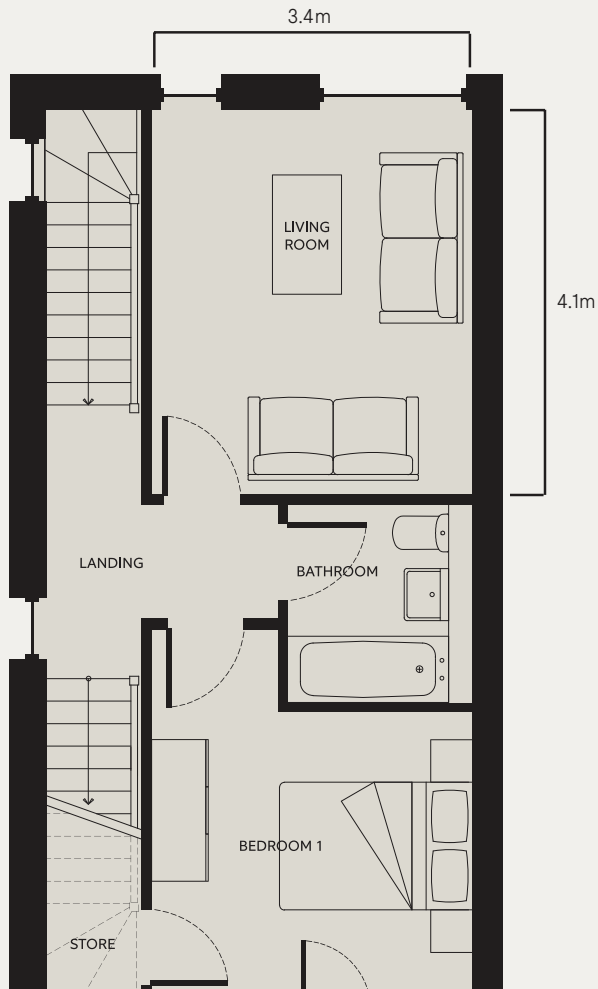
Kitchen	0.00m x 0.00m	00'0" x 00'0"
Dining Area	0.00m x 0.00m	00'0" x 00'0"



TRENT BASIN

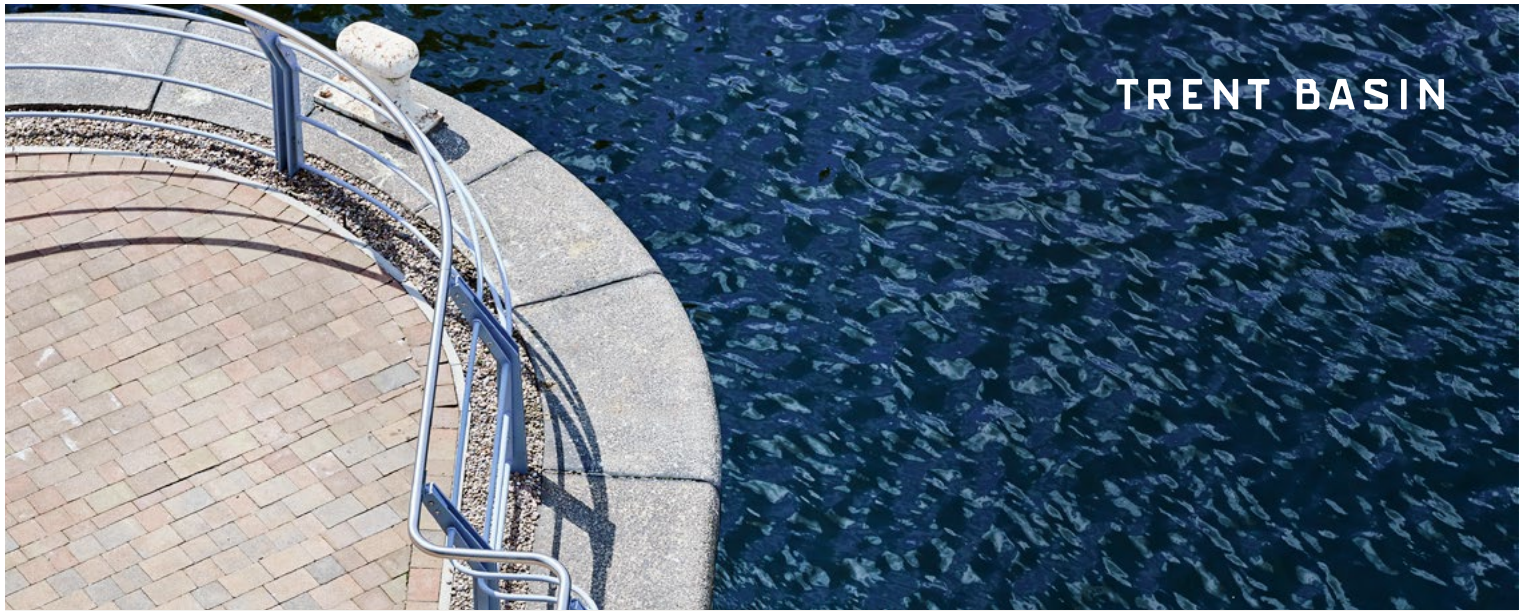
22 —

Riverfront First floor plan



Dimensions

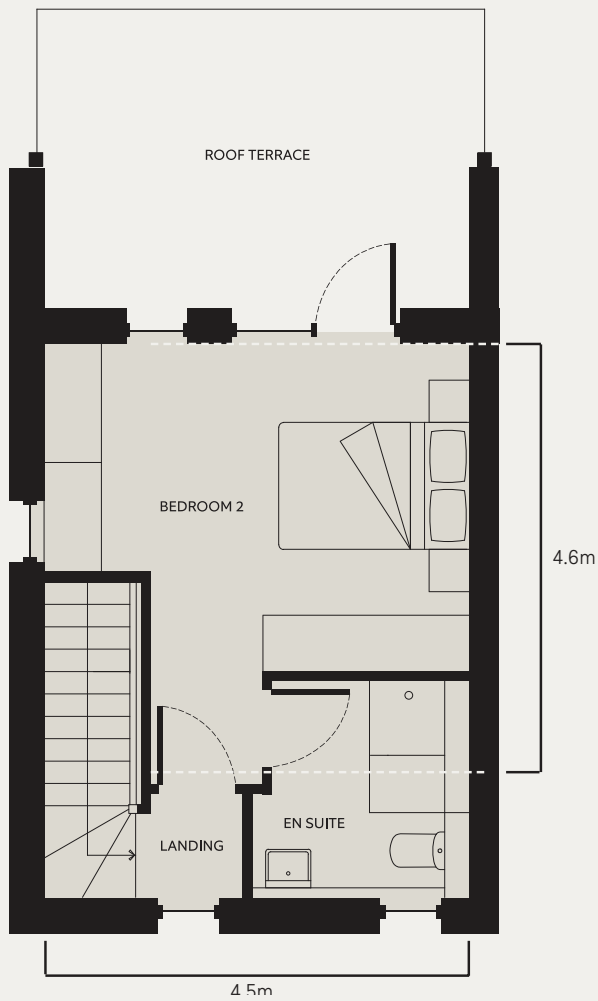
Living Room	0.00m x 0.00m	00'0" x 00'0"
Bedroom 1	0.00m x 0.00m	00'0" x 00'0"



TRENT BASIN

22 —

Riverfront Second floor plan



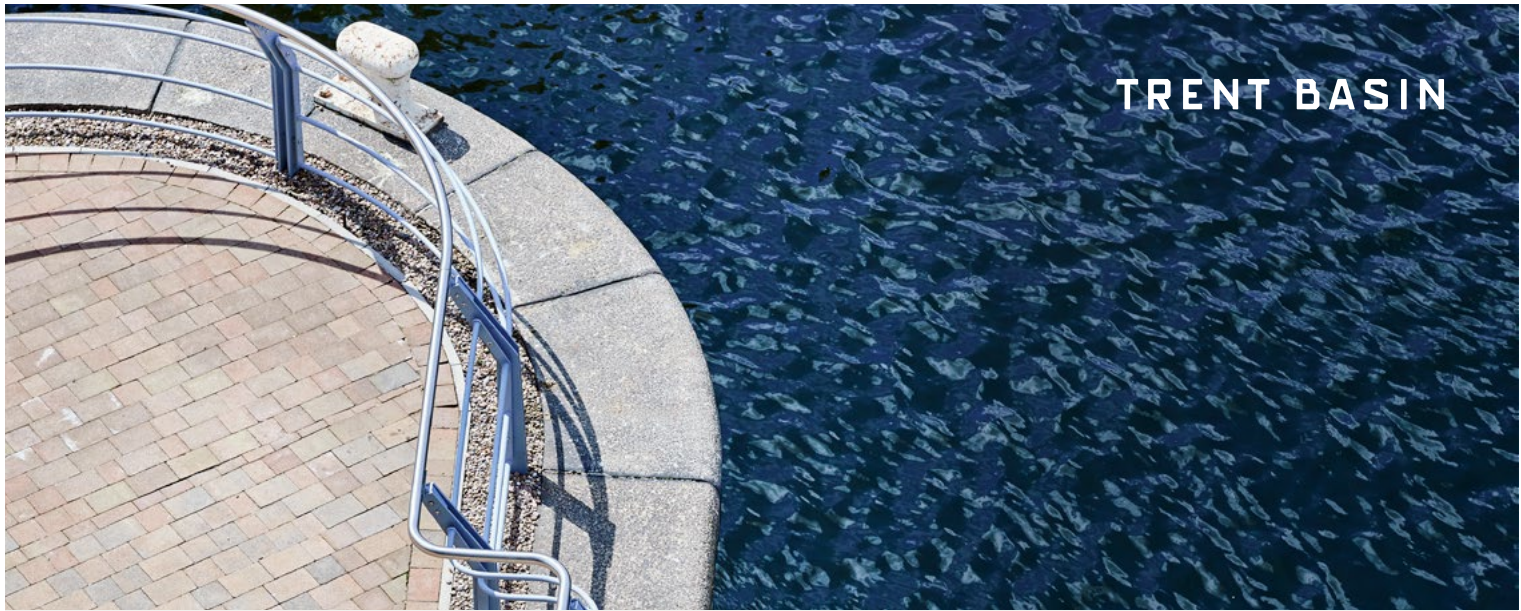
Dimensions

Bedroom 2	0.00m x 0.00m	00'0" x 00'0"
Roof Terrace	0.00m x 0.00m	00'0" x 00'0"

Townhouse

Plot number twenty three

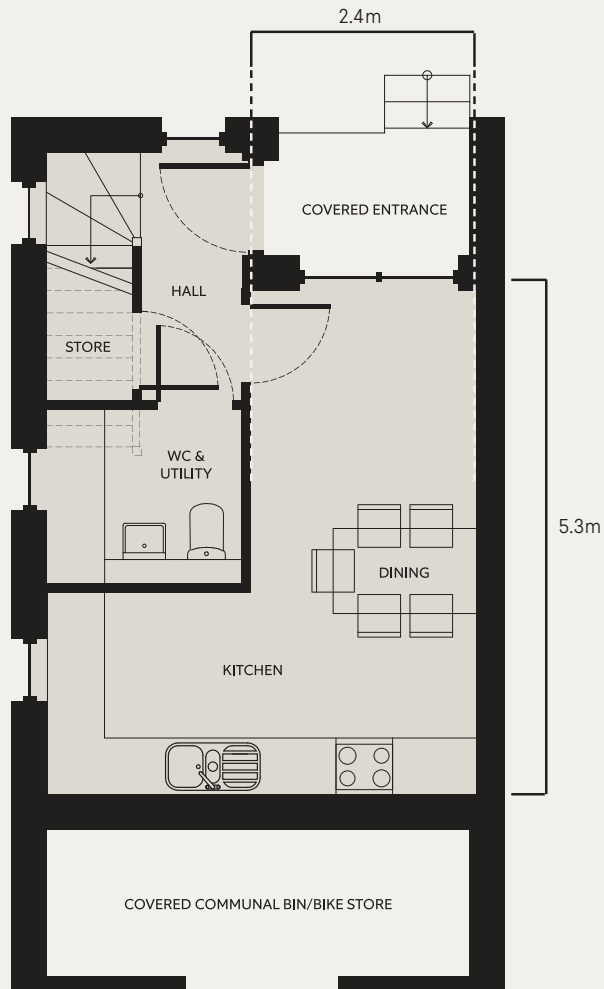
23 —



TRENT BASIN

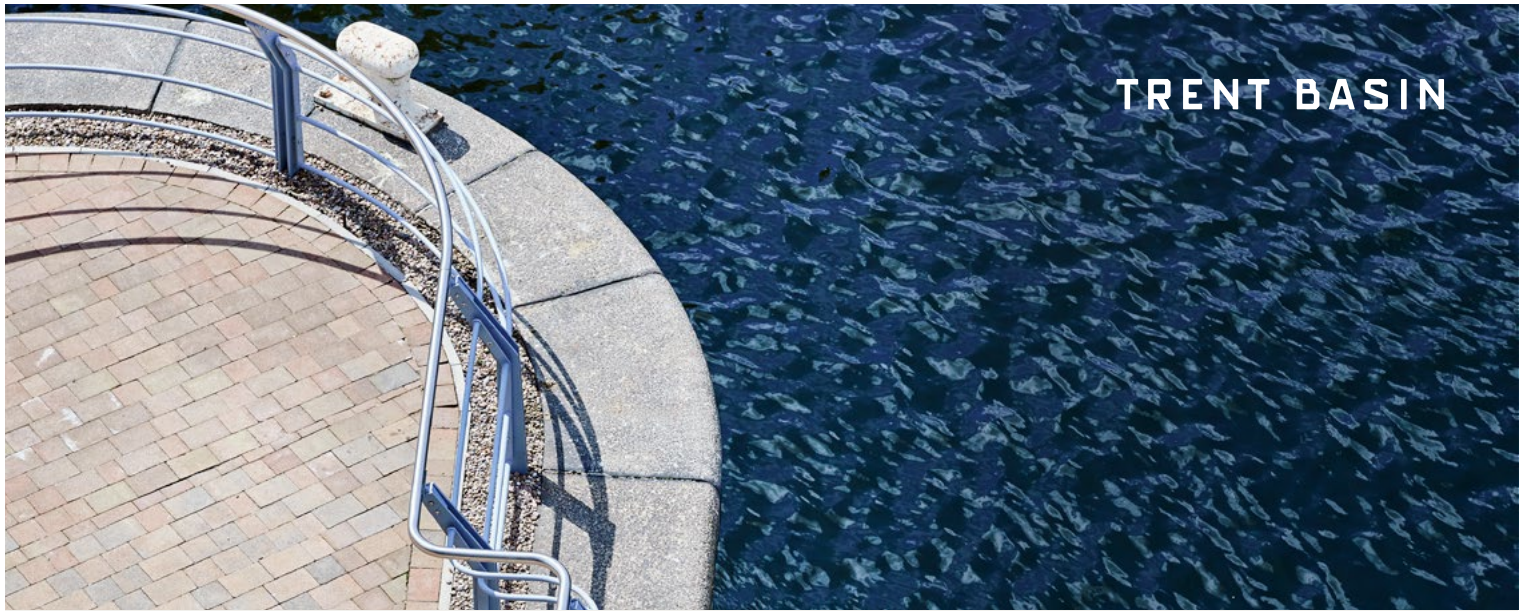
23 —

Riverfront Ground floor plan



Dimensions

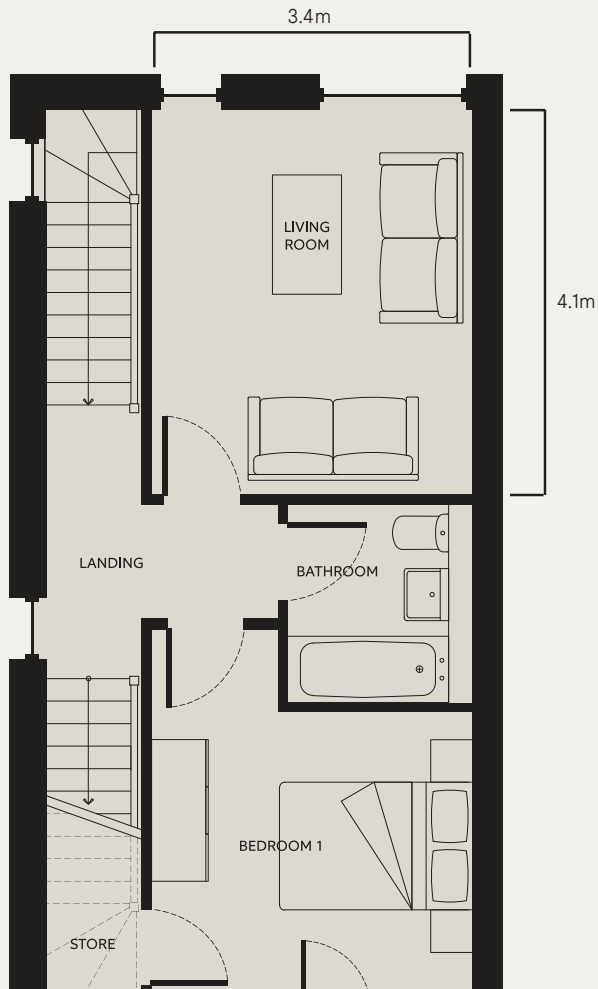
Kitchen	0.00m x 0.00m	00'0" x 00'0"
Dining Area	0.00m x 0.00m	00'0" x 00'0"



TRENT BASIN

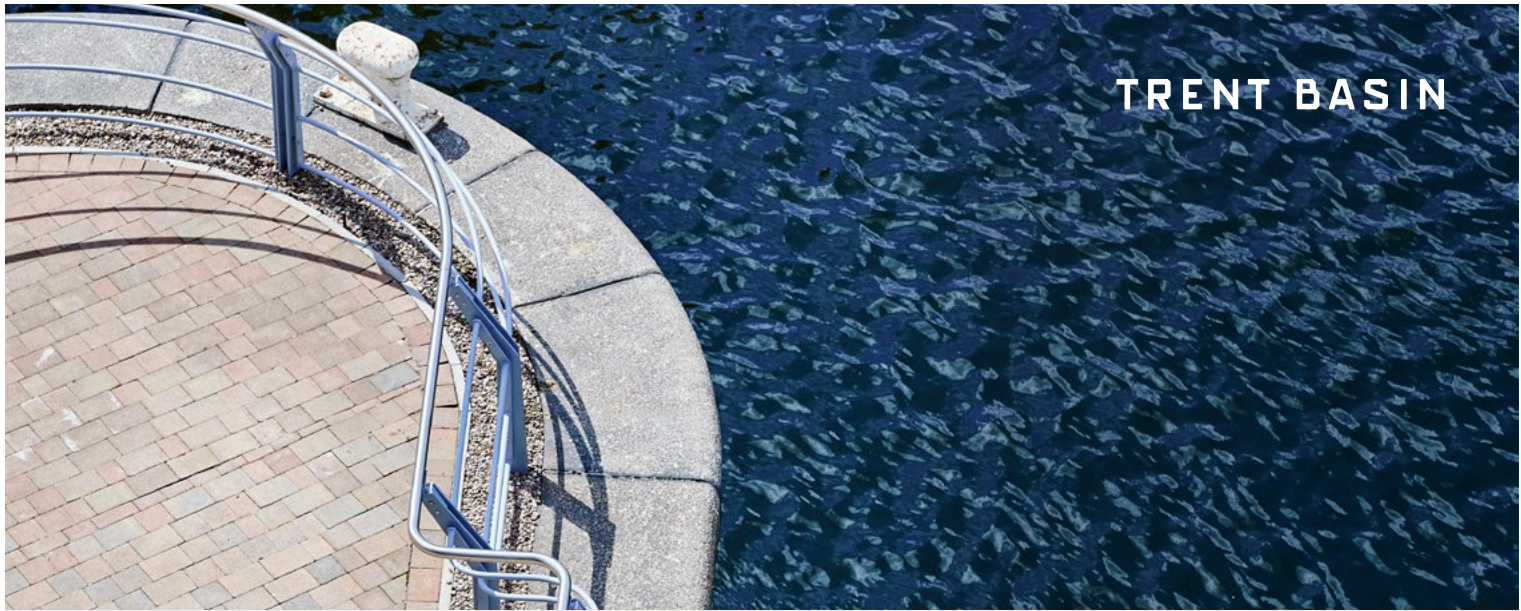
23 —

Riverfront First floor plan



Dimensions

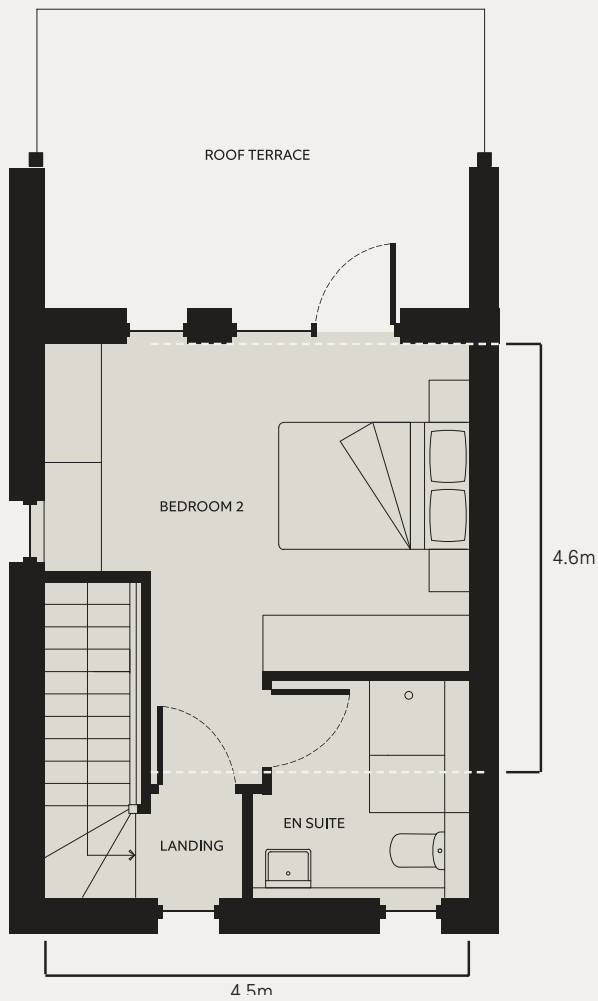
Living Room	0.00m x 0.00m	00'0" x 00'0"
Bedroom 1	0.00m x 0.00m	00'0" x 00'0"



TRENT BASIN

23 —

Riverfront Second floor plan



Dimensions

Bedroom 2	0.00m x 0.00m	00'0" x 00'0"
Roof Terrace	0.00m x 0.00m	00'0" x 00'0"